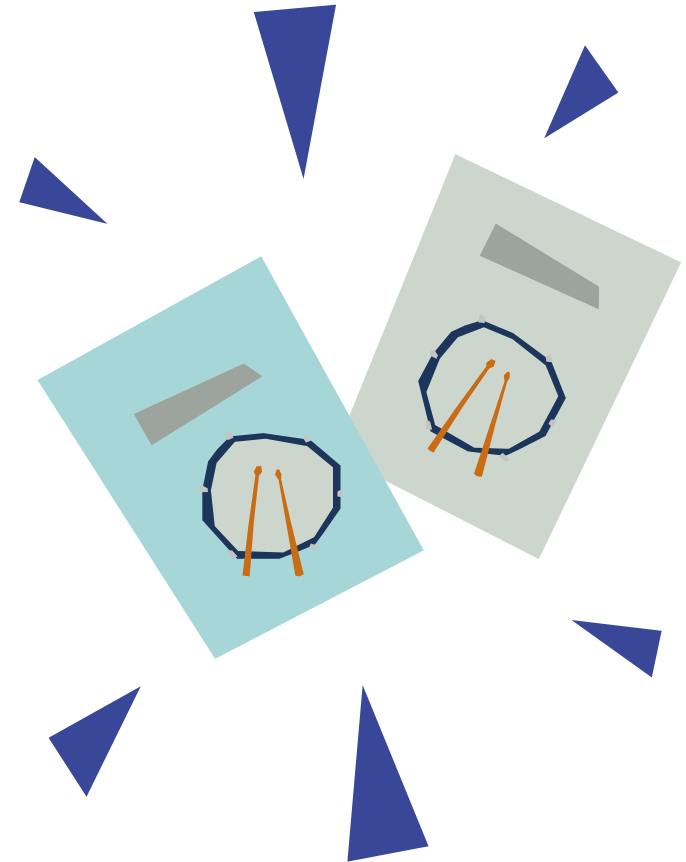


Sound Pairs Cards (2-3 players)

How to play:

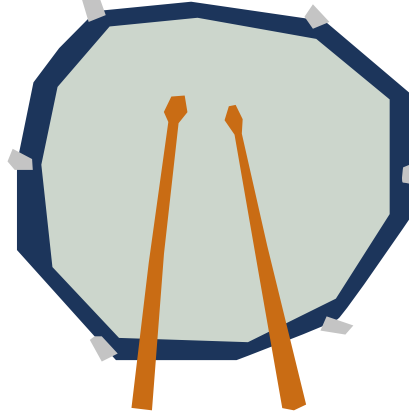
- Print 3 sets of the Sound Pairs Cards.
- Shuffle and place face down on table/ground in 4 rows.
- Players take turns to turn over 2 cards of their choice.
- If the Sound Card matches the Name Card they keep both cards and have another go.
- If the two cards do not match they turn them face down.
- Players take turns to turn over 2 cards and try to match them.
- The winner is the player with the most cards when all the cards have been matched.



Sound
Pairs Cards



Sound
Pairs Cards



Sound
Pairs Cards



Sound
Pairs Cards



Guitar

Sound
Pairs Cards



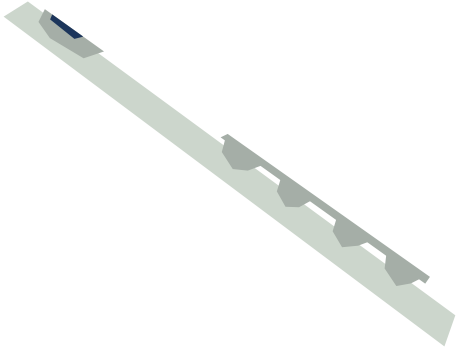
Drum

Sound
Pairs Cards



Violin

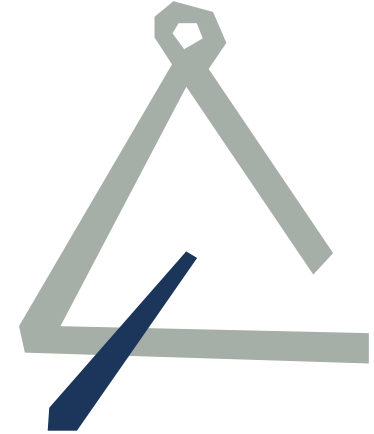
Sound
Pairs Cards



Sound
Pairs Cards



Sound
Pairs Cards



Sound
Pairs Cards



Flute

Sound
Pairs Cards



Cello

Sound
Pairs Cards

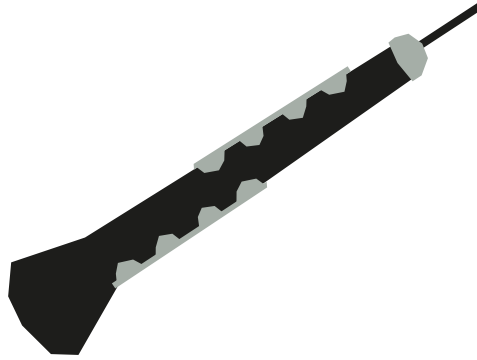


Triangle

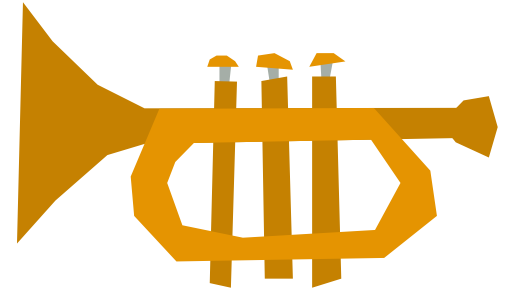
Sound
Pairs Cards



Sound
Pairs Cards



Sound
Pairs Cards



Sound
Pairs Cards



Piano

Sound
Pairs Cards



Oboe

Sound
Pairs Cards

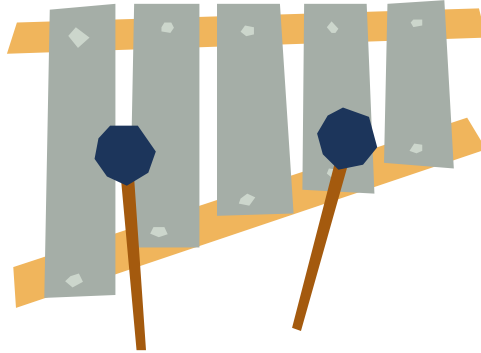


Trumpet

Sound
Pairs Cards



Sound
Pairs Cards



Sound
Pairs Cards



Sound
Pairs Cards



Trombone

Sound
Pairs Cards



Xylophone

Sound
Pairs Cards



Harp