

# Paper windmill

This windmill is not only fun to make, but also a great way of learning about the wind!

## Materials

- Crayons or Markers
- Pencil
- Push pin or drawing pin
- Paper
- Straw



## Tools

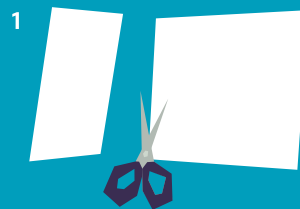
- Scissors
- Eraser



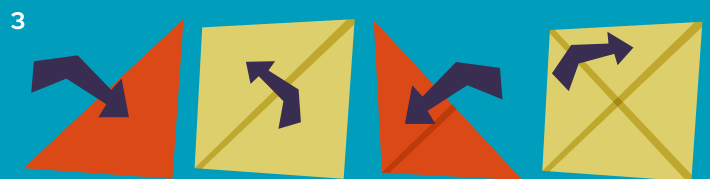
## Instructions

- 1 Take your piece of paper and cut it into a perfect square.

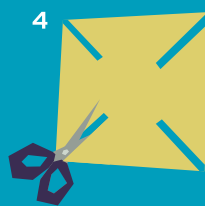
An easy way to do this is fold the paper into a triangle, taking one corner and lining it up to the other side. This will leave extra on one side that, once cut, gives you a square!



- 2 Decorate both sides of the paper however you want.



- 3 Fold the paper diagonally so it turns into a triangle and crease it gently. Repeat this for the opposite direction as well. When you unfold you will have a creased "X" on the page.



- 4 Cut along the creases about halfway to the middle of the paper. Be sure not to cut all the way.

- 5 Bend each corner into the middle. Make sure to bend and not fold.

- 6 Once all 4 corners are in the middle push the push pin through them all as well as the straw or eraser. Be careful not to hurt yourself with the pin!

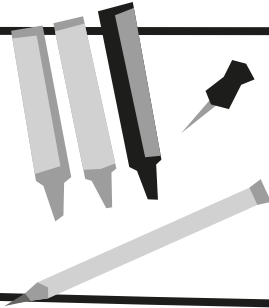


# Paper windmill

This windmill is not only fun to make, but also a great way of learning about the wind!

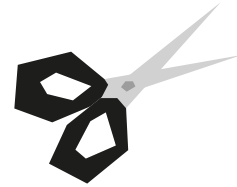
## Materials

- Crayons or Markers
- Pencil
- Push pin or drawing pin



## Tools

- Scissors



## Instructions

- 1 Take your piece of paper and cut it into a perfect square.

An easy way to do this is fold the paper into a triangle, taking one corner and lining it up to the other side. This will leave extra on one side that, once cut, gives you a square!

- 2 Decorate both sides of the paper however you want.

- 3 Fold the paper diagonally so it turns into a triangle and crease it gently. Repeat this for the opposite direction as well. When you unfold you will have a creased "X" on the page.

- 4 Cut along the creases about halfway to the middle of the paper. Be sure not to cut all the way.

- 5 Bend each corner into the middle. Make sure to bend and not fold.

- 6 Once all 4 corners are in the middle push the push pin through them all as well as the straw or eraser. Be careful not to hurt yourself with the pin!

